



DATA SHEET

LOGITECH ROOMMATE

Turn any space into an appliance-based video conferencing room with RoomMate, an appliance purpose-built for video collaboration. RoomMate runs CollabOS, the unifying operating system within Logitech's video bar appliances, providing a simple, consistent deployment across all meeting rooms.

COLLABOS APPLIANCE FOR SUPPORTED CONFERENCE CAMERAS AND ROOM SOLUTION PERIPHERALS

By connecting RoomMate with MeetUp or a Rally System, IT can deploy Microsoft Teams Rooms on Android, Zoom Rooms Appliances, or other video conferencing solutions in any meeting space. For rooms with custom audio systems, RoomMate is compatible with select partners like Biamp, QSC, and Shure.

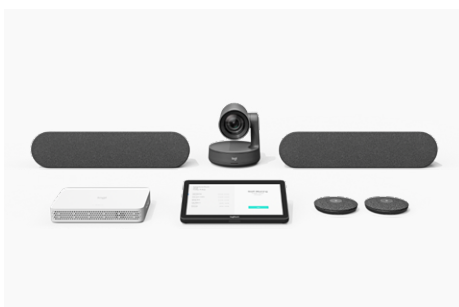
RoomMate is built for deployment and management at scale. In a low-profile form factor, RoomMate delivers all the capabilities needed for HD video conferencing with one or two displays and can be mounted securely and out of sight. Easily monitor and manage RoomMate together with other devices through Logitech Sync, Teams admin center, or Zoom Device Management.



Logitech RoomMate shown with Rally Plus system

PURPOSE-BUILT FOR VIDEO COLLABORATION

RoomMate runs CollabOS, which allows you to easily deploy Microsoft Teams Rooms on Android, Zoom Rooms Appliances, and other leading video conferencing services.



MODULAR VERSATILITY

Turn any space into an appliance-based video conferencing room. Connect the modular Rally System or MeetUp to RoomMate and add a Logitech Tap touch controller, Scribe whiteboard camera,* and other collaboration devices to your meeting rooms.



POWER, WITH CONNECTIONS

In a sleek, low-profile form factor, RoomMate delivers all the power you need for HD video conferencing in rooms with one or two displays.



FLEXIBLE, NEAT, SECURE

Mount RoomMate securely and out of sight. The optional Compute Mount supports discreet installation and cable retention behind displays, inside cabinets, and under tables.

*Scribe compatibility may vary, see www.logitech.com/support/scribe-compatibility for the latest information.

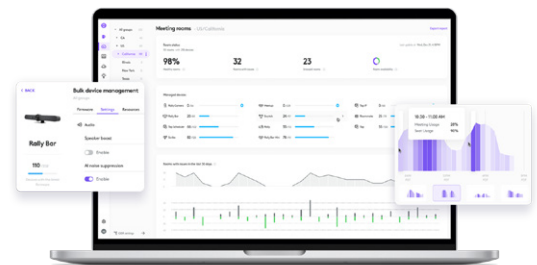
VERIFIED AUDIO PARTNERS

Use the audio system of your choice. Default to the conference camera's audio when you pair RoomMate with MeetUp or Rally System. Or choose a verified audio system from select partners when RoomMate is used alongside Rally Camera.



SIMPLE TO MANAGE

Easily manage your Logitech video collaboration devices with Logitech Sync. Monitor room health, deploy updates, and modify settings all from a single cloud-based platform. And with Sync Insights, you can see how meeting spaces are utilized over time.



PURPOSE-BUILT FOR VIDEO COLLABORATION

Deploy video collaboration solutions at scale with CollabOS, the secure operating system powering Logitech appliances and select devices.



GENERAL		INTERFACES
<p>Appliance Mode: Supports Microsoft Teams Rooms on Android, Zoom Rooms, GoToRoom, Pexip Room, RingCentral Rooms. For the latest information on certifications and compatibility, visit www.logitech.com/support/vc-certifications.</p> <p>Certified Hardware: Supports Logitech MeetUp, Rally Camera, Rally System, Rally Plus System, Tap, Tap IP</p> <p>Verified Hardware: Supports Biamp TesiraFORTÉ X 400, QSC Q-SYS Core 8 Flex, Shure IntelliMix P300. For latest information on compatible products, contact your preferred partner.</p> <p>Network Protocol Support: IPv4, IPv6</p> <p>Proxy Support: IP based Proxy, FQDN based Proxy, Proxy using PAC file</p>		<p>HDMI Out: 2</p> <p>HDMI In: 1</p> <p>USB: 3x Type A</p> <p>Network: 10/100/1G Ethernet</p> <p>WiFi: 802.11a/b/g/n/ac</p>
PACKAGE CONTENTS		DIMENSIONS
Logitech RoomMate	Mounting plate	Height: 34.5 mm (1.36 in)
Power supply	Remote control	Width: 161 mm (6.34 in)
AC cable	User documentation	Depth: 211 mm (8.31 in)
POWER & CABLES		SECURITY
<p>Power Supply: Auto-sensing</p> <p>Operating Voltage/Power: 100-240V, 19V, 4.74A</p> <p>Power Supply Dimensions: 127 mm x 51 mm x 30 mm</p> <p>DC Cable: 1.5 m/4.9 ft</p> <p>AC Cable: 1 m/3.28 ft</p>		<p>Full Disk Encryption: AES-128</p> <p>Data Encryption: Symmetric Keys, PKI</p> <p>Device Identity: Protected by device attestation</p> <p>Device Access: Authenticated using API</p> <p>Key Protection: Arm TrustZone, RPMP</p> <p>Device Security: Kensington Lock</p>
SOFTWARE		ENVIRONMENTAL
<p>Operating System: Logitech CollabOS 1.4 or higher</p> <p>Device Management: Logitech Sync and supported device management platforms</p>		<p>Operating Temperature: 0 to 40 °C</p> <p>Storage Temperature: -40 to 70 °C</p> <p>Humidity: 10 to 95%</p>
WARRANTY		PART NUMBERS
<p>Standard: two-year limited hardware warranty included</p> <p>Extended: Additional one-year and three-year extended warranties available at the time of hardware purchase. Contact your reseller for availability.</p>		<p>Logitech RoomMate: 950-000085</p>



www.logitech.com/RoomMate

Contact your reseller
or contact us at

www.logitech.com/vcsales

Logitech Americas
7700 Gateway Blvd.
Newark, CA 94560 USA

Logitech Europe S.A.
EPFL - Quartier de l'Innovation
Daniel Borel Innovation Center
CH - 1015 Lausanne

Logitech Asia Pacific Ltd.
Tel : 852-2821-5900
Fax : 852-2520-2230

© 2021 Logitech. Logitech, the Logitech logo and other Logitech marks are owned by Logitech and may be registered. All other trademarks are the properties of their respective owners. Logitech assumes no responsibility for any errors that may appear in this publication. Product, pricing and feature information contained herein is subject to change without notice.

Published November 2021